

# LIVERPOOL

SEASON 1954-55

# FOOTBALL CLUB

Directors :

Alderman W. J. HARROP, J.P. (Chairman).  
T. V. WILLIAMS (Vice-Chairman).  
R. L. MARTINDALE, M.B.E., J.P.  
Alderman S. R. WILLIAMS, G. A. RICHARDS, J.P.,  
T. McCONNELL, H. ROBSON ROBERTS,  
J. W. MORRIS, H. CARTWRIGHT.  
D. WELSH (Manager).



FOOTBALL LEAGUE MATCH  
**LIVERPOOL v. LUTON TOWN**

AT ANFIELD

SATURDAY, 2nd APRIL, 1955

Kick-off 3 p.m.

OFFICIAL

PRICE



PROGRAMME

THREEPENCE

## FROM THE BOARDROOM.

Our fourth meeting with Lincoln City during the current season provided the "Imps" with the opportunity to obtain revenge for their defeat at Anfield in the F.A. Challenge Cup 3rd Round Replay, and this they accomplished with a 4—2 victory. The City were the more impressive team on the day's display and merited victory. We created few openings for scoring chances and in addition our defence was not as safe as it might have been. Ray Lambert suffered a torn muscle in the latter part of the first half but continued to play in his own position throughout the match.

In the match at Hull last Saturday, we maintained our unbeaten away record since the New Year, and were a little unfortunate in not obtaining both points. Both goals for Hull City were scored by Jensen, their Danish left back, from penalty awards. The first of these appeared to be rather a harsh decision, given when Tommy McNulty, deputising for Lambert at right back, handled the ball in falling after tackling a Hull forward, but there was no doubt about the second, Geoff Twentyman making a goal-keeping save when Doug Rudham was out of goal.

The ground conditions in this game could scarcely have been worse, and long before the end the pitch was a veritable quagmire, which taxed the strength of the players to the uttermost, and made good ground football impossible.

The reserve team have had a very successful 1955 as since the year opened, they have gained from the ten Central League matches played a total of 16 points, divided equally between Home and Away games, and have only lost that played at Huddersfield when we crashed 5—0.

Our supporters will be gratified to learn that Laurie Hughes has been successfully operated on for the removal of a cartilage and hopes to have left hospital by the time this appears in print.

## Easter Holiday Matches at Anfield.

GOOD FRIDAY, 8th APRIL.

CENTRAL LEAGUE

**LIVERPOOL Res. v. CHESTERFIELD Res.**

Kick-off 3 p.m.

SATURDAY, 9th APRIL

CENTRAL LEAGUE

**LIVERPOOL Res. v. PRESTON NORTH END Res.**

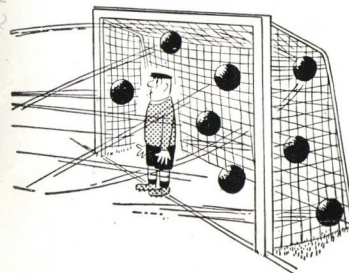
Kick-off 3 p.m.

EASTER MONDAY, 11th APRIL

FOOTBALL LEAGUE.

**LIVERPOOL v. PORT VALE**

Kick-off 3 p.m.



When you think it's time to stop

**DART IN for a**  
**Double Top**  
**Higson's Brown Ale**



## Brief Biographies of the Luton Town Players.

**R. BAYNHAM (Goalkeeper).** When it comes to goalkeepers, Luton are unlike many other clubs, rather spoilt for choice, as they have two of the best in the country in England international Bernard Streten and Ron Baynham. The latter has been first choice since taking over from Streten early in November, and has since missed only one game through injury. A native of Birmingham, Baynham joined the Hatters from Worcester City, and made his senior debut during the 1952-53 season, in which he had 22 outings. Last term he was kept in the reserves by the consistency of Streten, and played only five first team matches. His form in the current campaign has been sufficient to suggest that he will remain first choice for a long time providing he steers clear of injuries.

**S. DUNNE (Right Back).** One of the three Southern Irishmen in Luton's senior side, Seamus Dunne joined the club from Shelbourne in 1950, after previous experience with Drogheda United. A native of Wicklow, he was given his first chance with the seniors in the 1951-52 campaign, during which he made thirteen appearances. The following winter he established a more regular place in the side, and since then has been kept out only by injuries. In the current campaign he has played a large part in helping the Hatters to maintain their strong challenge for promotion, displaying the form which has won him international honours for Eire on a number of occasions.

**T. AHERNE (Left Back).** Christened Thomas, but known to all at Luton as "Bud," Aherne is a native of Limerick and was signed as a left half from Belfast Celtic in exchange for a substantial fee in March, 1949. Luton have had no cause to regret their bargain, for since then he has become one of the most popular and consistent members of their senior side. He played for Ireland on a number of occasions, and after the ban on southern-born players came into effect, made many appearances for his native Eire. He moved to full-back soon after joining the Hatters, and has given excellent service on both right and left flanks. Last winter he missed seven games through injury, but is an ever-present so far in the current campaign.

**J. PEMBERTON (Right Half).** With the departure to Derby of centre forward Jesse Pye, and the move into the attack of Bob Morton, Luton gave Jim Pemberton a chance to show what he could do at right half. He took his opportunity so well that he has kept his place ever since. A native of Stourbridge, from where Luton signed him in 1949, Pemberton made his senior debut at inside-forward in 1951, and then had a fairly lengthy spell at outside left. Following this he reverted to his more usual position at full-back, where he frequently deputised for the regular senior players. Last winter he made only four first team appearances, one of which was at inside right and another at left half.

**S. OWEN (Centre Half).** Sid Owen has proved to be one of Luton Town's best-ever acquisitions, for he cost them only a small fee, even by the standards of those days, when signed from his native Birmingham in 1947. Originally a wing-half, Owen was moved into the middle with such success by the Hatters that he gained a place in the F.A. party which toured Australia in 1950. England "B" honours soon followed, and full caps came his way against Yugoslavia and Hungary last winter. Owen has not had the best of fortune in the way of injuries during the past few seasons, and last winter was absent from seventeen matches through that cause.

**W. SHANKS (Left Half).** Like his wing-half partner Pemberton, Wally Shanks is one of Luton's most versatile performers, and has filled a number of different positions since joining the club as an outside right. He had trials with Chelsea, but the London club did not sign him and he moved to

Kenilworth Road in 1946. Born in Valetta, Malta, of Scottish parents, Shanks has frequently had to be content with a place in the Hatters' reserve side, but since the beginning of last season, in which he made 26 appearances, has been a regular member of the first team. In that campaign he had a few outings at right half, but in the present campaign has appeared exclusively on the left flank.

**R. DAVIES (Outside Right).** Roy Davies is a countryman of our goalkeeper, Douglas Rudham, having been born in Port Elizabeth, South Africa. He came to Britain to join Clyde, the Scottish League club, and it was from there that Luton secured his services in May, 1951. He made his first team debut at the start of the 1951-52 campaign, and has been a regular member of the senior side ever since. Though generally selected at outside right, he has frequently appeared on the other flank of the attack, and has also had an occasional outing at wing-half.

**G. TURNER (Inside Right).** Well up among the country's leading goalscorers this winter is Gordon Turner. A native of Hull, and the son of a former Hull City winger, Turner was on Luton's books for a time as an amateur, and joined the paid ranks on his demobilisation from the Navy in 1950. He was given his first chance in the senior side during the 1950-51 campaign. It was not until he was switched from right half to inside-forward that Turner established a regular place in the first team, but since doing so at the start of the 1952-53 campaign he has shown tremendous improvement. Last winter he led Luton's marksmen with 16 goals in 32 outings, and his form this term led to his selection as a reserve for England "B" against Scotland "B" ten days ago.

**R. MORTON (Centre Forward).** Bob Morton is the only local-born player in Luton's senior side, having been born at nearby Eaton Bray. He signed professional forms in February, 1946, and made his senior debut for the Hatters at right half in the 1949-50 season. The following winter he made his place secure with some first class displays, and since then only injury has kept him out of the side. Last season he had a few outings at centre forward, and also appeared in all three half-back berths. The departure of Jesse Pye to Derby in October saw him drafted into the attack once more, and he has done a splendid job for his side since taking over the leadership of the line.

**G. CUMMINS (Inside Left).** No stranger to Merseyside, George Cummins is now settled at Kenilworth Road after a restless spell which prompted him to consider a further move. A native of Dublin, Cummins signed professional forms for Everton in November, 1950, after trials which he was given while spending a holiday in Liverpool. He made his senior debut for our Goodison Park neighbours in 1951-52, and played a large part in helping them to get to the semi-final of the F.A. Cup the following season. Luton paid a five figure fee when they took him to Kenilworth Road in May, 1953, and he made his first appearance for them in the first match of last season, in which he scored four times in 34 outings.

**M. CULLEN (Outside Left).** Michael Cullen has become a regular member of the Luton senior side since taking over from Adam in November. A native of Glasgow, he joined the Hatters from Douglasdale Juniors in 1952. He had an early opportunity to show what he could do in the first team, making his debut in the third match of the 1952-53 campaign at outside right. In all he made 16 appearances, and scored three goals during the remainder of that season. Last winter his senior outings were restricted to half that number, and all of them were on the right flank. He has not missed a game since being restored to the side this term, and has confirmed the good impression which he created in his earlier outings.

## Welcome to our Visitors from Luton.

### THE HATTERS HAVE AN EXCELLENT CHANCE OF PROMOTION THIS SEASON.

Today we extend a welcome to Luton Town, whose visit gives us a chance, which we trust our players will grasp, to return to winning form at Anfield. Victory will not prove easy, however, for the Hatters have been one of the Second Division's outstanding combinations all season, and come to us as current leaders. They have collected 43 points from their 33 League engagements to date, and hold top place in the table by virtue of a slightly better goal average than Blackburn Rovers, who also have the same number of points, but from two more games played.

Luton's success has been based, in the main, on their excellent home record. They have been beaten only once in a League match on their own ground at Kenilworth Road, Swansea winning there by the odd goal in three at the end of October. Only one other side has managed to take a point when visiting them. In away matches, the Hatters have also been playing reasonably well, showing four wins and a similar number of draws in 16 outings on opponents' grounds. Two of their victories, at Nottingham Forest and Hull, have been by a margin of four goals.

In all they have netted 72 goals in League games, having failed to score only three times. Their biggest win was against their main promotion rivals, Blackburn Rovers, whom they defeated 7-3 at Kenilworth Road at the end of November.

Defensively they have also been on top of their form, keeping a clean sheet on no fewer than eleven occasions, and conceding only a single goal in eight other matches. No side has yet succeeded in scoring more than three times against them, and only 41 goals have been conceded in all. This is a very sound record.

Luton have utilised the services of 23 players so far, and of these full-backs Dunne and Aherne and inside-right Turner are ever-presents. Several of the others called upon have made only a handful of appearances between them, and to all intents and purposes the club has had long spells with practically an unchanged team.

At one time last winter the Hatters looked as though they would make a similarly strong bid to take First Division football to Kenilworth Road for the first time in the club's history. After a bad start, in which they won only one of their first eight fixtures, they showed such a big improvement that only one defeat was suffered in the next fourteen outings.

Unfortunately for their hopes, they were not able to keep up the good work for the remainder of the campaign, and eventually had to settle for sixth place in the table, their total of 48 points being eight fewer than those obtained by Leicester City and Everton, the promoted clubs. Nobody among the 25 players who appeared in their senior side that season had an ever-present certificate, the best attendance record being that of Moreton, who missed two matches.

### THE HATTERS WERE THE FIRST SOUTHERN CLUB TO BECOME PROFESSIONAL.

It is not generally known that Luton are the oldest professional club in the south of England. Originally formed as an amateur organisation by the amalgamation of two existing clubs in 1886, they embraced professionalism six years later when they decided to make small payments to certain of their leading players.

After several years in the old Southern League, they joined the Second Division of the Football League in 1897-98. Their first two seasons were fairly successful, but in 1899-1900 they finished next to bottom, and in view of the long journeys entailed and the consequent increase in expenditure, it

was decided to return to the Southern League rather than apply for re-election. One can hardly imagine any club doing that these days.

This step having been taken, the Hatters remained outside Football League circles until the 1920-21 campaign, when they applied for and were granted membership of the newly-formed Southern Section of the Third Division. Their second venture in the League was viewed with some misgivings in certain places, for they had finished the previous campaign in 20th place in the Southern League. All fears that they might be unable to hold their position in the new sphere were quickly dispelled, however, for Luton finished in the top half of the table in each of their first four seasons.

They continued to more than hold their own, and between 1920-21 and 1936-37, when promotion to the Second Division was gained, fell below the half-way mark only four times, the lowest being in 1924-25, when they were 17th. Their promotion campaign was highly successful, and they finished with 58 points, their highest-ever total up to that time. They scored 103 goals, more than any other club in the four divisions of the League except Sunderland, who won the First Division title that year, and conceded only 53 in their 42 League matches.

In the previous season, when they were runners-up in the Southern Section, a point behind Coventry City, the Hatters recorded one of the biggest wins in the whole of their history, and one of their players established a scoring record which still stands as the highest individual total in any one game in that section of the Third Division.

It was almost 19 years ago, on Easter Monday, 1936. Three days earlier Luton had shared four goals with Bristol Rovers at Eastville, and everything pointed to a keen tussle in the return meeting at Kenilworth Road. The Hatters, however, were in devastating form, and when the final whistle blew had scored twelve times without Rovers being able to muster a single goal in reply. Joe Payne, leading the attack for the first time, helped himself to ten of the goals, including nine in succession.

Promotion gained, Luton set about consolidating their Second Division place, and it was not until football resumed after the second World War that they were in any danger of returning to the Southern Section. They dropped to 17th in 1949-50, though they had a margin of six points over the club in the next to bottom place, so were never in real peril. The following winter they fared even worse, eventually finishing 19th with two points in hand over Chesterfield, who went down in company with Grimsby Town.

After this narrow escape Luton's fortunes took a turn for the better, and two years ago they were third, six points behind promoted Huddersfield. Apart from the current campaign, this is the highest position they have ever occupied in the Second Division.

The Hatters have enjoyed little success in the F.A. Cup Competition, and reached the last eight for the first time in 1932-33. In the first round they beat Barnsley 2-0 at home in a replay, after a goalless draw on the Yorkshire club's ground. This was followed by a home win over Tottenham, and an away victory at the expense of Halifax Town. The fourth round brought defeat, however, for they were drawn away against Everton, who beat them 6-0 at Goodison Park.

They have reached the fifth round four times since the war, only to lose on each occasion. Three of these were in successive seasons, from 1946-47 to 1948-49, and the other in the current campaign, when they beat Workington by five clear goals in the third round, disposed of Rotherham at Millmoor 5-1 in the next stage, and then lost at home to Manchester City 2-0.

TRIPS BY TRAIN — GOOD FRIDAY

PORT VALE v. LIVERPOOL

Kick-off 5-30 p.m.

To BURSLEM 7/-

LIVERPOOL LIME STREET—DEPART 3.15 p.m.

EDGE HILL—3.20 p.m. MOSSLEY HILL—3.30 p.m.

ALLERTON—3.34 p.m.

Return from BURSLEM at 7.30 p.m.

BRITISH RAILWAYS



# Cuppa?...

**BEFORE OR AFTER THE MATCH!**

Enjoy a steaming-hot drink, and a tasty snack at one of the City Caterers refreshment bars inside the ground.

**GOOD FOOD! LOW PRICES!**

LIVERPOOL

## CITY CATERERS

MARYBONE - LIVERPOOL Phone: Central 1864

## LIVERPOOL v. LUTON TOWN

Right

LIVERPOOL (Red Jerseys)

Left

K. R. RUDHAM (1)

LAMBERT (2)

MORAN (3)

SAUNDERS (4)

TWENTYMAN (5)

SOUTH (6)

PAYNE(7) ANDERSON(8) LIDDELL(9) EVANS(10) ACOURT(11)



ADAM(11) CUMMINS(10) MORTON(9) TURNER(8) DAVIES(7)

SHANKS (6)

OWEN (5)

PEMBERTON (4)

AHERNE (3)

DUNNE (2)

STRETEN (1)

Left

LUTON TOWN (White Jerseys)

Right

Referee : Mr. C. W. Kingston (Newport, Mon.).

Linesmen : Mr. J. Lindsay (Red Flag), Mr. W. Mellor (Yellow Flag).

## McConnell's Restaurant

14 COOK STREET

(Under Law Association Rooms)

LUNCHES : TEAS : DINNERS

Fully Licensed

## Potted Pars about Clubs and Players in the News.

Not one of Luton Town's players who are making such a strong bid for promotion this winter has ever played First Division football. The only two members of the staff with playing experience in the higher sphere are Manager Dally Duncan and trainer Harry Wright, both of whom appeared regularly in the First Division with Derby County in their playing days.

In their early days Luton used to play in the rather startling colours of black and pink, and retained these until becoming members of the Southern Section of the Third Division after the first War. They then adopted their present colours of white shirts and black shorts.

Though born in Aberdeen, Mr. Dally Duncan, Luton's manager, never played in Scottish League football. He came across the border to join Hull City at the age of 18, and then moved on to Derby. A distinguished career with that club saw him win a Cup Final medal and appear nine times for Scotland in internationals. He has held three positions at Luton, being appointed player-coach in 1946, player-manager a year later, and team manager at the end of the 1947-48 campaign.

Today's visit to Anfield of Luton Town is their first in a League match, but they have played at Anfield once previously. That was in a third round F.A. cup-tie in 1938-39, when we beat them 3-0.

It was pleasing to see Eric Anderson back among the goals at Hull last week. His equaliser there brought his total for the season to six, which makes him third highest scorer, among the regular members of the first team, but a good way behind John Evans and Bill Liddell.

Cecil Law, Bury's South African left winger, who joined them from Derby during the close season, was made captain of the side for last week's home game with Plymouth, on the occasion of his marriage. He celebrated by leading the Shakers to victory, which ended a run of three successive home defeats.

After today's game, we start our three-match Easter programme with a visit to Port Vale on Friday and to Nottingham Forest the following day. Easter Monday will see our return home game with the Vale.

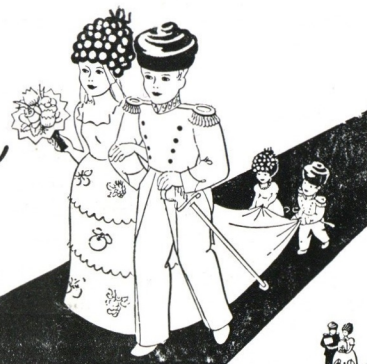
FOR EVER

*Parker  
&  
Jobson*

CAMEO  
CHOCOLATES

REGAL  
FRUIT DROPS

MAKERS OF FINER CHOCOLATES AND CONFECTIONERY SINCE 1834



TODAY'S COLLECTION IS ON BEHALF OF THE LEAGUE OF  
WELLDOERS WHO DO SO MUCH GOOD WORK FOR THE  
POOR AND NEEDY OF THE CITY OF LIVERPOOL.

PLEASE CONTRIBUTE GENEROUSLY.

# BENT'S

*It's NEW!  
It's SWEET!  
It's STRONG!*

11<sup>D</sup>  
PER BOT.

"RED LABEL"  
STOUT!

BENT'S • BREWERS LIVERPOOL & STONE.

SEASON 1954-1955.

1st TEAM PLAYERS' APPEARANCES AND GOAL SCORERS.

FOOTBALL LEAGUE.

	Played	Goals
D. E. Underwood	6	—
K. R. Rudham	13	—
C. T. Asheroft	14	—
T. McNulty	15	—
R. Moran	12	—
F. W. Lock	22	—
R. Saunders	20	—
G. B. Wilkinson	14	—
L. Hughes	26	—
R. Lambert	19	—
G. Twentyman	28	—
B. H. Jackson	22	1
D. Campbell	6	—
J. B. Payne	10	1
E. Anderson	24	6
T. Rowley	8	6
J. L. Bimpson	8	2
W. B. Liddell	31	24
J. Evans	30	25
A. J. Arnell	6	3
A. Acourt	24	2
A. South	3	—
F. Tomley	2	—

Tel. BOOTLE 2538/9

Tel. BOOTLE 1131

**LAWRENSON'S**  
LUXURY COACHES

PRIVATE PARTIES | SPECIAL EXCURSIONS BY ROAD FOR "AWAY" MATCHES | DAILY TOURS

**MERTON RD., BOOTLE**

OFFICIAL CONTRACTORS TO LIVERPOOL FOOTBALL CLUB

"Agents for British & Continental Motor Tours"

(Up to and including Wednesday, 30th March, 1955).

LEAGUE—DIVISION 2.

CENTRAL LEAGUE

P	W	D	L	F	A	Pts	P	W	D	L	F	A	Pts		
Luton T.	33	19	5	9	72	41	43	Preston N.E.	33	22	3	8	75	36	47
Blackburn R.	35	20	3	12	104	70	43	Bolton W.	34	20	7	7	56	21	47
Leeds U.	35	18	5	12	56	50	41	Man. U.	34	20	5	9	77	44	45
W. Ham U.	33	16	8	9	65	56	40	Burnley	35	17	7	11	76	50	41
Rotherham	32	17	4	11	71	54	38	Everton	34	18	6	10	62	37	42
Notts C.	33	17	4	12	60	57	38	Blackpool	33	16	6	11	71	49	38
Birmingham	31	15	7	9	62	32	37	Stoke C.	34	17	4	13	62	58	38
Stoke C.	32	14	9	9	48	37	37	Liverpool	34	16	6	11	63	59	39
Middlesbro'	34	16	4	14	62	65	36	Wolves	32	17	5	10	58	40	39
Bristol R.	33	15	5	13	65	60	35	Huddersfield	31	17	4	10	63	64	38
Fulham	34	13	8	11	64	63	34	Newcastle	32	14	5	13	55	50	33
Liverpool	33	14	6	13	73	73	34	W. Brom. A.	33	14	5	14	65	63	33
Swansea T.	32	13	7	12	66	63	33	Aston V.	34	13	5	16	54	64	31
Bury	33	12	8	13	63	62	32	Bury	35	12	6	17	59	68	30
Notts F.	33	13	5	15	44	48	31	Man. C.	33	13	6	14	59	69	32
Hull C.	33	10	9	14	39	51	29	Blackburn R.	32	11	7	16	61	66	29
Doncaster R.	33	12	5	16	48	74	29	Sheff. U.	33	12	4	17	53	57	28
Lincoln C.	33	10	8	15	58	69	28	Barnsley	31	9	8	14	40	50	26
Plymouth A.	35	9	7	19	50	73	25	Sheff. W.	31	10	5	16	51	68	25
Port Vale	33	7	10	16	36	60	24	Leeds U.	33	7	6	20	46	87	20
Ipswich T.	34	9	4	21	51	79	22	Derby C.	33	6	6	21	39	83	18
Derby C.	35	6	9	20	46	66	21	Chesterfield	33	3	3	27	35	98	9

Real Value

3/7 PER OZ.

put that in  
your pipe  
and prove it!



IT'S A GALLAHER TOBACCO

TWO OF  
**CARROLL'S**  
 LEADING LINES



**MICK McQUAID**  
 FLAKE  
 TOBACCO

Per 4/2 Ounce  
 Packed in vacuumised tins

3/7 per 20  
 1/9½ per 10

**Stocked by all leading Tobacconists**

**P. J. CARROLL & CO. LTD. GREENLAND STREET LIVERPOOL**  
 GT. GEORGE PLACE



**HALF-TIME SCORES.**  
 INTERNATIONAL MATCH.

A . ENGLAND		v. SCOTLAND	
LEAGUE—DIVISION 1.			
<b>B</b>	ASTON VILLA	3	v. BURNLEY 1
<b>C</b>	BLACKPOOL	4	v. EVERTON 0
<b>D</b>	BOLTON W.	2	v. WEST BROM. A. 4
<b>E</b>	CHARLTON A.	1	v. NEWCASTLE U. 1
<b>F</b>	HUDDERSFIELD T.	0	v. ARSENAL 1
<b>G</b>	MANCHESTER U.	5	v. SHEFFIELD U. 0
<b>H</b>	PORTSMOUTH	1	v. MANCHESTER C. 0
<b>J</b>	SHEFFIELD W.	1	v. CARDIFF C. 1
<b>K</b>	SUNDERLAND	1	v. LEICESTER C. 1
<b>L</b>	TOTTENHAM H.	2	v. CHELSEA 4
<b>M</b>	WOLVES	1	v. PRESTON N.E. 1
LEAGUE—DIVISION 2.			
<b>N</b>	BLACKBURN R.	3	v. BIRMINGHAM C. 3
<b>O</b>	BRISTOL R.	1	v. HULL CITY 0
<b>P</b>	DERBY C.	1	v. NOTTS FOREST 2
<b>Q</b>	DONCASTER R.	0	v. LEEDS UNITED 1
<b>R</b>	FULHAM	1	v. MIDDLESBROUGH 2
<b>S</b>	NOTTS C.	3	v. ROTHERHAM U. 2
<b>T</b>	PLYMOUTH A.	1	v. LINCOLN C. 0
<b>U</b>	PORT VALE	1	v. BURY 0
<b>V</b>	SWANSEA T.	3	v. STOKE CITY 5
<b>W</b>	WEST HAM U.	4	v. IPSWICH T. 0
LEAGUE—DIVISION 3 (NORTH).			
<b>X</b>	GRIMSBY T.		v. SOUTHPORT
<b>Y</b>	TRANMERE R.		v. MANSFIELD T.



Ask for

# THRELFALL'S "BLUE LABEL" ALES

ALWAYS IN PERFECT  
CONDITION

## FIXTURES—1954-55.

### FOOTBALL LEAGUE

		F.	A.
1955			
Jan.	1—Derby County.....	H 2	: 0
"	8—Lincoln (3rd Rd.)A	1	: 1
"	12—Lincoln (Replay)H	1	: 0
"	22—Blackburn R. ....	H 4	: 1
"	29—Everton (4th Rd)A	4	: 0
Feb.	5—Fulham .....	A 2	: 1
"	12—Swansea Town...H	1	: 1
"	19—Huddersfield T...H	0	: 2
	F.A. Cup (5th Rd.)		
Mar.	3—Notts County .....	A 3	: 0
"	5—Stoke City .....	H 2	: 4
"	12—Bury .....	A 4	: 3
"	19—Lincoln City .....	H 2	: 4
"	26—Hull City .....	A 2	: 2
Apr.	2—Luton Town.....	H	:
"	8—Port Vale.....	A	:
"	9—Notts Forest.....	A	:
"	11—Port Vale.....	H	:
"	16—Leeds United.....	H	:
"	23—Middlesbrough ..A	:	:
"	26—West Ham U. ....	A	:
"	30—Birmingham C. H	:	:
May	2—Rotherham U.....	A	:

### CENTRAL LEAGUE

		F.	A.
1955			
Jan.	1—Derby County....	A 3	: 1
"	8—Wolves. ....	A 1	: 1
"	15—Blackpool .....	H 3	: 3
"	22—Blackburn R. ....	A 3	: 2
"	29—Barrow .....	H 2	: 2
	Lancs. Sen. Cup/2nd Rd.		
Feb.	5—Bolton Wand.....	H 1	: 0
"	12—Huddersfield T...A	0	: 5
Mar.	5—Everton .....	A 1	: 1
"	10—Barrow .....	A 1	: 5
	Lancs. Cup Replay (2nd Rd.)		
"	12—Stoke City.....	H 4	: 3
"	19—Sheff. United .....	A 2	: 0
"	23—West Brom. A.....	H 2	: 1
"	26—Barnsley .....	H 1	: 1
Apr.	2—Burnley .....	A	:
"	8—Chesterfield .....	H	:
"	9—Preston N.E. ....	H	:
"	11—Chesterfield .....	A	:
"	16—Bury .....	A	:
"	23—Leeds United.....	H	:
"	27—Manchester U. ..H	:	:
"	30—Man. City.....	A	: